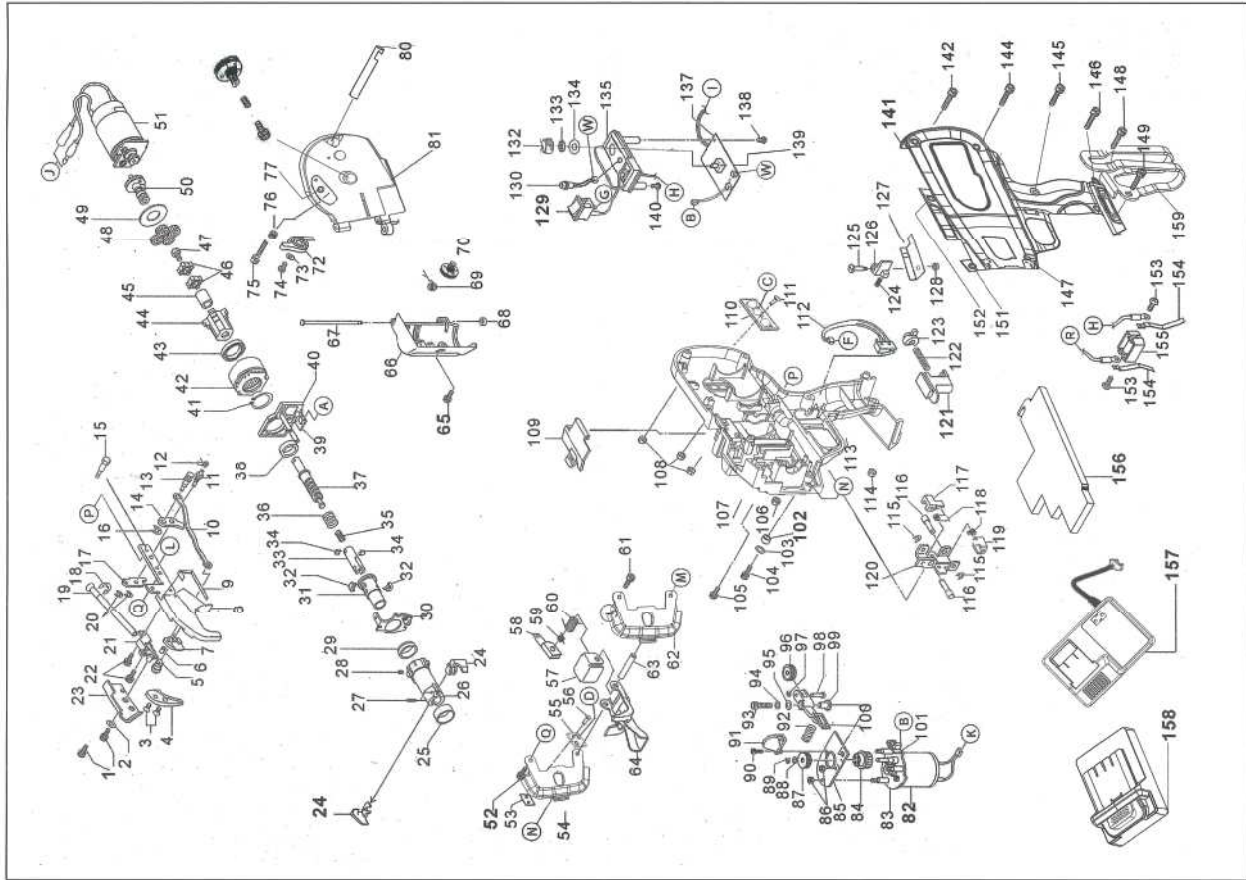


ATA 450 / 580



- NO. Name
- 1 bolt 3x5mm
 - 2 washer 3x8x1.5mm
 - 3 hex head screw 3x8mm
 - 4 wire guide
 - 5 fixed cutter
 - 6 pin
 - 7 cutter
 - 8 arm A unit
 - 9 leaf spring
 - 10 connecting rod
 - 11 shaft
 - 12 spring
 - 13 pin
 - 14 cutter lever
 - 15 arm fixing screw
 - 16 ring Φ3.5
 - 17 cutter lever B
 - 18 ring Φ4
 - 19 pipe
 - 20 ring Φ2
 - 21 wire guide B
 - 22 bolt 3x6mm
 - 23 arm B
 - 24 hook
 - 25 sleeve guide
 - 26 sleeve B
 - 27 ws pin 2.5x10mm
 - 28 screw 3x3mm
 - 29 cutter ring guide
 - 30 cutter ring assy
 - 31 sleeve A
 - 32 key
 - 33 tip axis B
 - 34 key B
 - 35 comp-spring
 - 36 comp-spring
 - 37 tip axis A
 - 38 bumper
 - 39 reset-sensor board
 - 40 tip axis guide assy
 - 41 ring Φ18
 - 42 internal gear
 - 43 wheel 20x27x4mm
 - 44 planet gauge unit
 - 45 pin
 - 46 key plate
 - 47 bolt 4x6mm
 - 48 planet gear
 - 49 gear press wheel
 - 50 sun gear unit
 - 51 twist motor
 - 52 bolt 3x6mm

- NO. Name
- 53 fixed-switch n ut-board
 - 54 cover L unit
 - 55 fixed switch
 - 56 panhead screw 2x10mm
 - 57 curl guide cover
 - 58 fixed-switch pole
 - 59 fixed-pole spring
 - 60 spring
 - 61 bolt 3x6mm
 - 62 cover R unit
 - 63 stopper shaft
 - 64 curl guide
 - 65 bolt 3x10mm
 - 66 molther cover A assy
 - 67 step pin
 - 68 rubber washer
 - 69 torsion spring
 - 70 coil wire locating devicep
 - 71 torsion spring
 - 72 reel stopper
 - 73 washer 3x8x1.5mm
 - 74 panhead screw 3x8mm
 - 75 bolt 3x6mm
 - 76 reel friction adjust screw
 - 77 reel friction gear
 - 78, 79 panhead screw 3x8mm
 - 80 joint/feel magazine
 - 81 reel stay
 - 82 motor
 - 83 motor plate
 - 84 feeding gear assy
 - 85 partition plate
 - 86 nut m3
 - 87 feeding gear B1
 - 88 washer 3x7xO.8mm
 - 89 ring Φ2
 - 90 bolt 3x6mm
 - 91 wire guide C
 - 92 comp. spring
 - 93 bolt 4x16mm
 - 94 spring washer Φ4
 - 95 washer 4x8xO.8mm
 - 96 feeding gear B2
 - 97 ring Φ2
 - 98 step pin
 - 99 hollow pin
 - 100 release lever
 - 101 feeding-sensor board
 - 102 bush forjaw
 - 103 washer 3x6xO.8mm
 - 104 bolt 3x10mm
 - 105 bolt 3x8mm

- NO. Name
- 106 nut m3
 - 107 frame L assy
 - 108 nut m3
 - 109 window
 - 110 spool sensor
 - 111 panhead screw 2x6mm
 - 112 trigger switch
 - 113 nut m3
 - 114 nut Φ3
 - 115 ring Φ3
 - 116 step pin
 - 117 jaw A
 - 118 torsion spring
 - 119 jaw B
 - 120 jaw base
 - 121 trigger
 - 122 compression spring
 - 123 trigger lock
 - 124 compression spring
 - 125 step pin
 - 126 release stopper
 - 127 release stopper board
 - 128 nut m3
 - 129 main switch unit
 - 130 LED unit
 - 131, 132 wire length torque dial
 - 133 panhead screw 2x4mm
 - 134 torque spring
 - 135 label, torque dial
 - 136, 137 sub PWB unit
 - 138 panhead screw 3x8mm
 - 139 wire length potentiometer
 - 140 panhead screw 3x8mm
 - 141 frame R assy
 - 142 bolt 3x14mm
 - 143 bolt 3x14mm
 - 144 bolt 3x 14mm
 - 145 bolt 3x10mm
 - 146 bolt 3x14mm
 - 147 bolt 3x14mm
 - 148 bolt 4x8mm
 - 149 bolt 4x8mm
 - 150 bolt 3x14mm
 - 151 washer 3x6xO.8mm
 - 152 pin
 - 153 panhead screw 3x8mm
 - 154 electrode plate
 - 155 electrode block
 - 156 main PCB unit
 - 157 battery charger
 - 158 battery
 - 159 hook